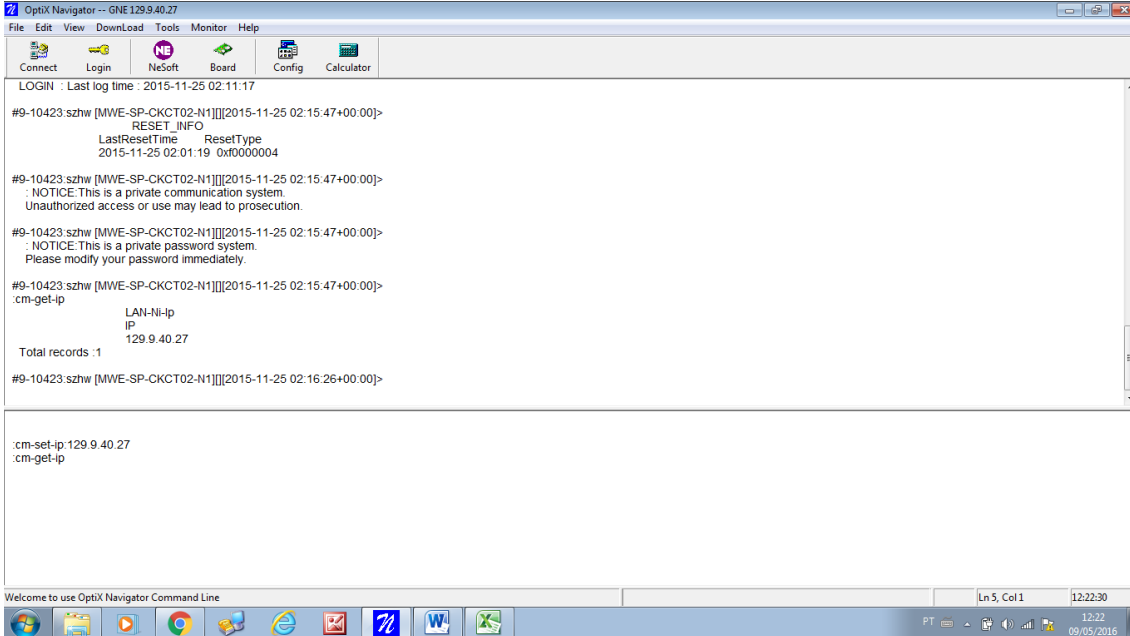


COMO RECONFIGURAR O ID E NAME DO RADIO HUAWEI NO NAVIGATOR MUDAR O IP DO RADIO

Primeiro dar o comando `:cm-set-ip:129.9.40.27`, depois desconecte do navigator depois conecte novamente e verifique se foi modificado o ip com o comando `:cm-get-ip`

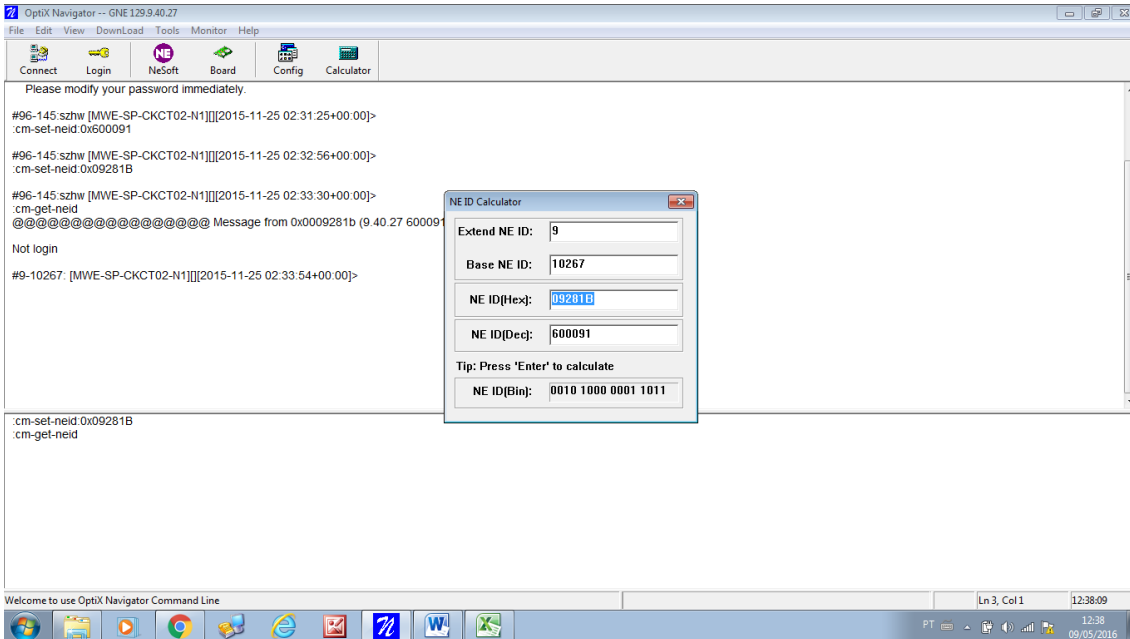


```
OptiX Navigator -- GNE129.9.40.27
File Edit View Download Tools Monitor Help
Connect Login NeSoft Board Config Calculator
LOGIN : Last log time : 2015-11-25 02:11:17
#9-10423:szhw [MWE-SP-CKCT02-N1][2015-11-25 02:15:47+00:00]>
      RESET_INFO
      LastResetTime      ResetType
      2015-11-25 02:01:19  0xf0000004
#9-10423:szhw [MWE-SP-CKCT02-N1][2015-11-25 02:15:47+00:00]>
:NOTICE:This is a private communication system.
Unauthorized access or use may lead to prosecution.
#9-10423:szhw [MWE-SP-CKCT02-N1][2015-11-25 02:15:47+00:00]>
:NOTICE:This is a private password system.
Please modify your password immediately.
#9-10423:szhw [MWE-SP-CKCT02-N1][2015-11-25 02:15:47+00:00]>
:cm-get-ip
      LAN-Ni-ip
      IP
      129.9.40.27
Total records :1
#9-10423:szhw [MWE-SP-CKCT02-N1][2015-11-25 02:16:26+00:00]>

:cm-set-ip:129.9.40.27
:cm-get-ip
```

Para modificar o id do radio huawei vai na opção calculator no navigator e coloca o 9 na extend NE ID e na opção Base NE ID coloque o id que deseja modificar depois de um enter que aparecera os demais números.

Feito isso de o comando `:cm-set-neid:0x09281B` que mudara o ip e depois o comando `:cm-get-neid` para verificar se mudou o id como a figura abaixo:



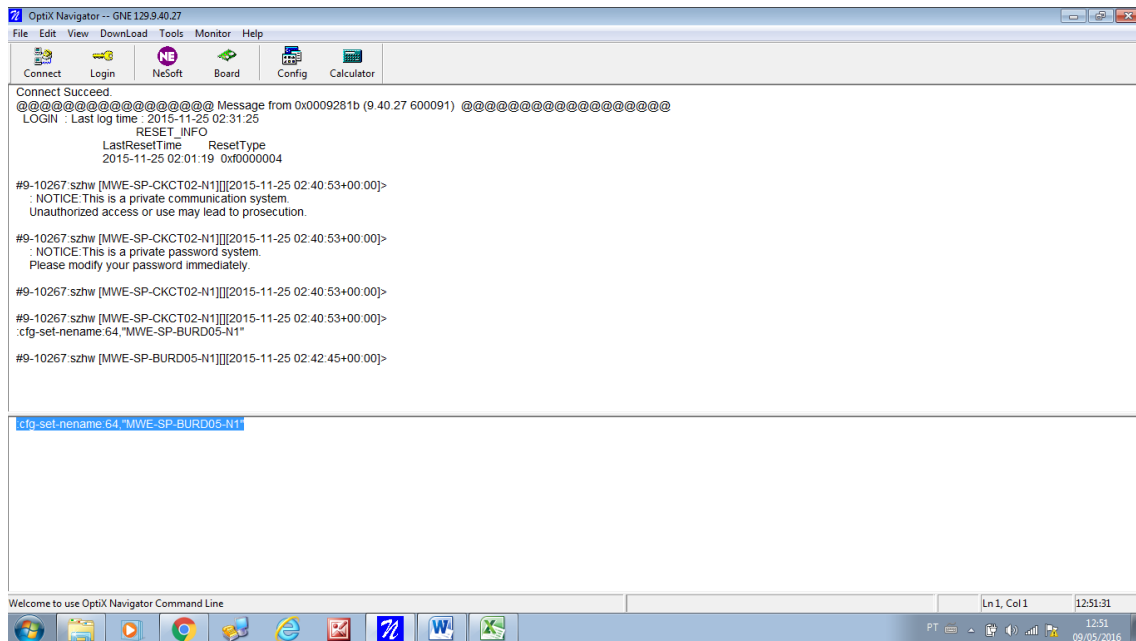
```
OptiX Navigator -- GNE129.9.40.27
File Edit View Download Tools Monitor Help
Connect Login NeSoft Board Config Calculator
Please modify your password immediately.
#96-145:szhw [MWE-SP-CKCT02-N1][2015-11-25 02:31:25+00:00]>
:cm-set-neid:0x600091
#96-145:szhw [MWE-SP-CKCT02-N1][2015-11-25 02:32:56+00:00]>
:cm-set-neid:0x09281B
#96-145:szhw [MWE-SP-CKCT02-N1][2015-11-25 02:33:30+00:00]>
:cm-get-neid
@@@@@@@@@@@@@@@@ Message from 0x0009281b (9.40.27 600091)
Not login
#9-10267: [MWE-SP-CKCT02-N1][2015-11-25 02:33:54+00:00]>

:cm-set-neid:0x09281B
:cm-get-neid
```

NEID Calculator

Extend NE ID:	9
Base NE ID:	10267
NE ID(Hex):	09281B
NE ID(Dec):	600091
Tip: Press 'Enter' to calculate	
NE ID(Bin):	0010 1000 0001 1011

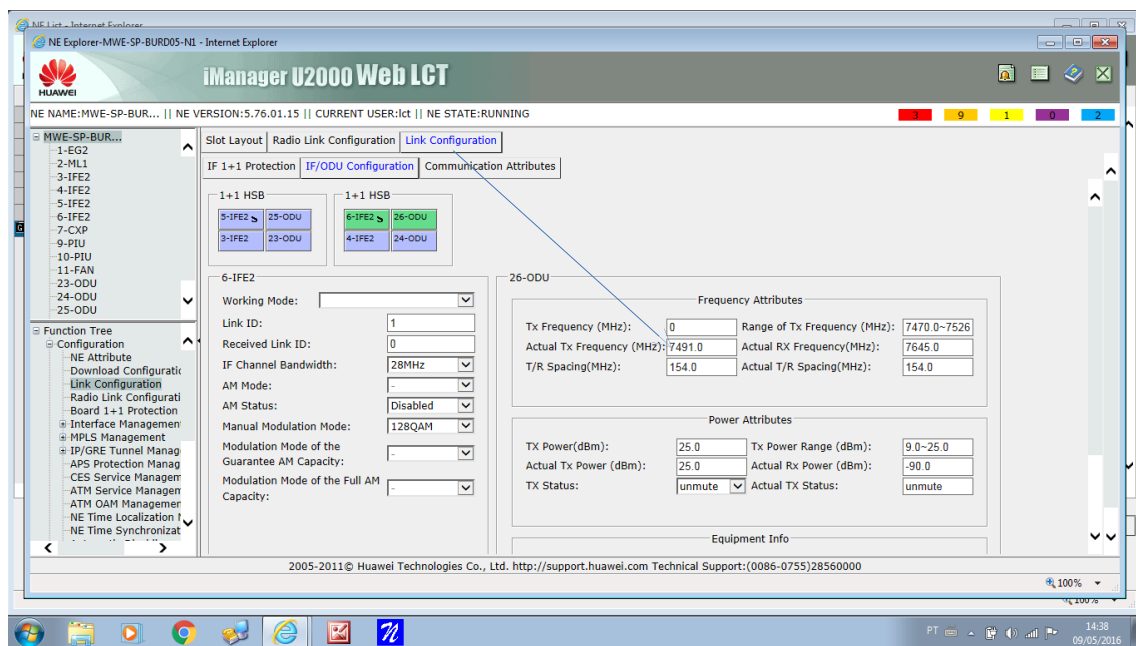
PARA MODIFICAR O NAME DO ID DAR O COMANDO :cfg-set-nename:64,"MWE-SP-BURD05-N1" conforme a figura abaixo:



Feito esse procedimento vamos conectar no web lct para configurar frequencia da ODU

Percebesse que a ODU 26 esta reconhecida para reconfiguraçãõ.

Na opção actual Tx frequências ira aparecer uma frequência automático copie essa frequência para opção Tx frequency e de um apply conforme as figuras abaixo:



Observe a seta indicando as frequências lembrando que cada enlace tem sua frequência e seu espaçamento

The screenshot displays the configuration interface for a radio link. The main window is titled "STATE: RUNNING" and "Configuration". The left sidebar shows a "Function Tree" with categories like "Configuration", "Interface Management", and "MPLS Management". The main area is divided into several sections:

- Communication Attributes:** Includes "Frequency Attributes" with fields for Tx Frequency (MHz) at 7491.0, Range of Tx Frequency (MHz) at 7470.0-7526, Actual Tx Frequency (MHz) at 7491.0, Actual RX Frequency (MHz) at 7645.0, T/R Spacing (MHz) at 154.0, and Actual T/R Spacing (MHz) at 154.0.
- Power Attributes:** Includes fields for TX Power (dBm) at 25.0, Tx Power Range (dBm) at 9.0-25.0, Actual Tx Power (dBm) at 25.0, Actual Rx Power (dBm) at -90.0, TX Status at unmute, and Actual TX Status at unmute.
- Equipment Info:** Includes Frequency (GHz) at 7, Equipment Type at SDH, Station Type at Tx low, Product SN at 943, and Transmission Power Level at High.

Buttons for "Query" and "Apply" are located at the bottom right of the configuration area. The footer of the interface reads "2005-2011 © Huawei Technologies Co., Ltd. http://support.huawei.com Technical Support:(0086-0755)28560000". The Windows taskbar at the bottom shows the date as 09/05/2016 and the time as 14:44.